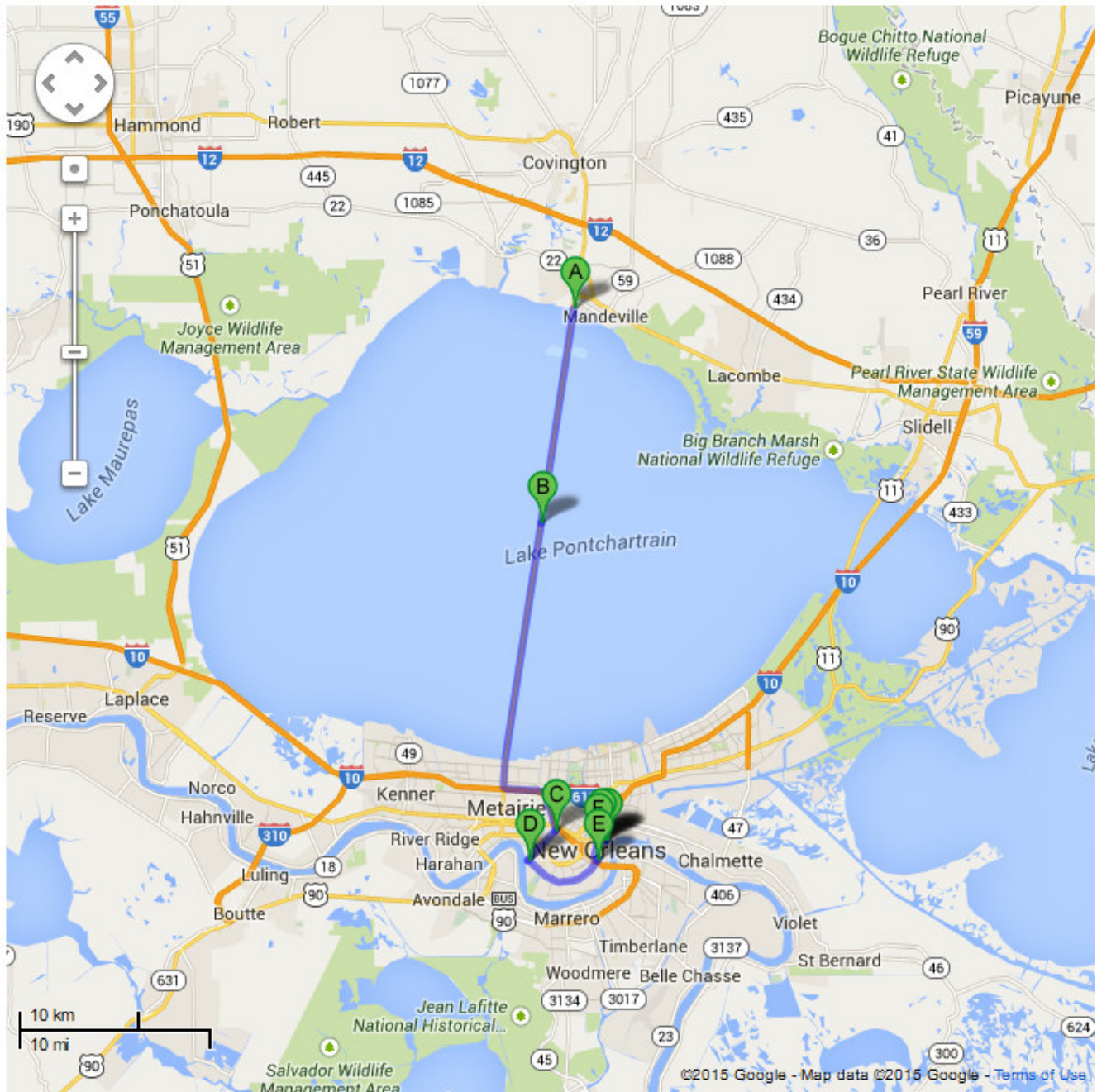


20_CityOf-NewOrleansLA_63km_10-10

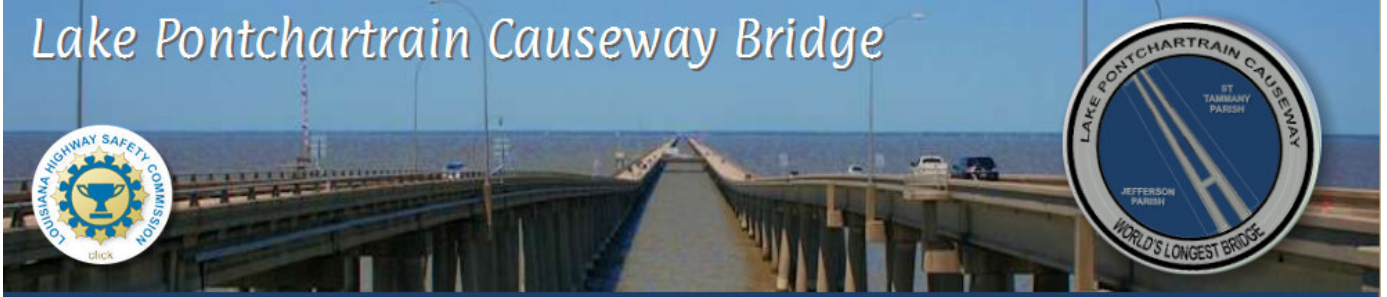
63 km - about 0 d 1 h 34 m - @ 240 kms/day = avg speed 40 kph

Lake Pontchartrain Causeway - Carrollton Ave - St Charles Ave - French Quarter (added 3 hrs for sightseeing) - Some Easy Rider scenery



- A** 100 N Causeway Blvd, Mandeville, LA, United
- B** Lake Pontchartrain Causeway, New Orleans, I
- C** 3700 South Carrollton Avenue, New Orleans, I
- D** 8040 St Charles Ave, New Orleans, LA, United
- E** 1040 St Charles Ave, New Orleans, LA, United
- F** 130 Roosevelt Way, New Orleans, LA, United
- G** 600 Bourbon Street, New Orleans, LA, United
- H** French Quarter, New Orleans, LA, United Stat
- I** 450 Basin Street, New Orleans, LA, United St

A - Lake Pontchartrain Causeway



C - D - E - Enter New Orleans:

DON'T MISS DRIVE

St. Charles Avenue is really a boulevard with a 150-year-old streetcar system winding down the middle. Other sights include huge oaks, period architecture, and the idyllic campuses of Tulane and Loyola Universities.

F - Easy Rider - The Roosevelt. 29.954405,-90.072443

130 Roosevelt Way, New Orleans, Louisiana, 70112

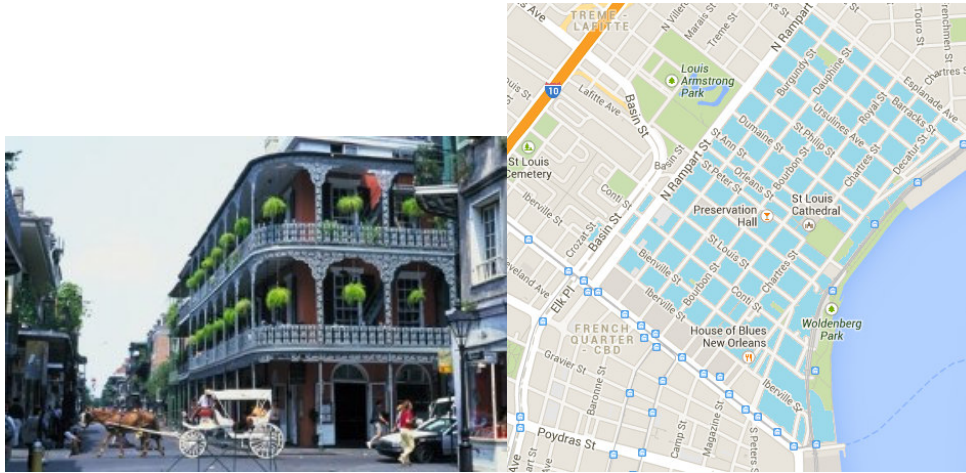


G - Easy Rider - Madame Tinkertoy's House of Blue Lights. 29.957837,-90.066372, corner Bourbon and Toulouse St, New Orleans, LA 70130. Fictitious place.



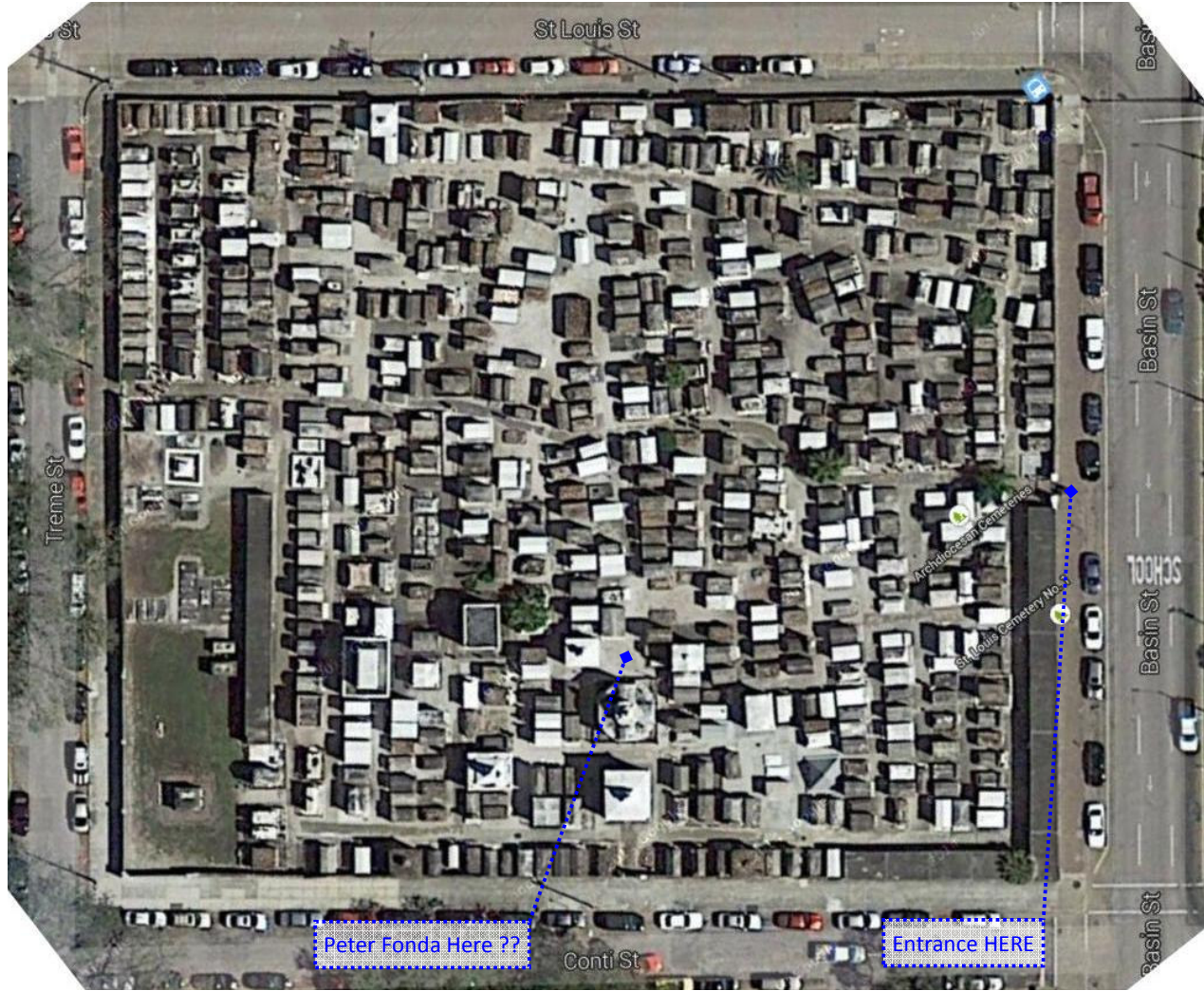
H - The French Quarter, New Orleans **N 29.956888°, W 90.062206°**. The French Quarter, also known as the Vieux Carré, is the oldest neighborhood in the city of New Orleans. After New Orleans (La Nouvelle-Orléans in French) was founded in 1718 by Jean-Baptiste Le Moyne de Bienville, the city developed around the Vieux Carré ("Old Square" in English), a central square. The district is more commonly called the French Quarter today, or simply "The Quarter," related to changes in the city with American immigration after the Louisiana Purchase.¹ Most of the present-day historic buildings were constructed during the late 18th century, during the city's period of Spanish rule, and reflect Spanish colonial architecture.

The district as a whole has been designated as a National Historic Landmark, with numerous contributing buildings that are separately deemed significant. It is a prime tourist destination in the city, as well as attracting loyal residents. Because of its distance from areas where the levee was breached during Hurricane Katrina in 2005, it suffered relatively light damage as compared to other areas of the city and the greater region. [Attractions/LA-FrenchQuarterNewOrleansParking.pdf](#)
http://en.wikipedia.org/wiki/French_Quarter See [Attractions/LA-FrenchQuarterNewOrleansParking.pdf](#)
<http://coolrain44.wordpress.com/2009/07/19/top-us-attractions-state-by-state/>



<http://www.frenchquarter.com/maps/parking6lots.pdf>

1 - Easy Rider – Acid Trip at St.Louis Cemetery No 1, 401-499 Basin St, New Orleans, LA 70112. 29.959045,-90.071031



SHOPPING

The Esplanade Mall

140 specialty shops and restaurants
1401 W. Esplanade Ave., Kenner
(504) 465-2161

French Market

Arts and crafts, farmers' market, and
souvenir stalls
1008 N. Peters St. between Barracks St. and
Jackson Square
(504) 522-2621

French Quarter

Souvenir shops and specialty boutiques
84-block area bounded by Esplanade Ave.,
Rampart St., Canal St., and the
Mississippi River
(800) 672-6124

Jackson Brewery

Mall with shops and restaurants
600 Decatur St.
(504) 566-7245

Magazine Street

Six miles of antique shops, art galleries,
restaurants, and specialty shops
From Canal St. to Audubon Park
(504) 342-4435

Riverwalk Marketplace

Specialty stores, boutiques, and restaurants
Bounded by Poydras, Canal, and Julia Sts.
and the Mississippi River
(504) 522-1555

Royal Street

Antique stores and upscale galleries
Royal St. in the French Quarter

The Shops at Canal Place

Designer boutiques and department store
333 Canal St.
(504) 522-9200



VISITOR INFORMATION

New Orleans Metropolitan Convention and Visitors Bureau

2020 St. Charles Ave.
New Orleans, LA 70130
(504) 566-5011 or (800) 672-6124
www.neworleanscvb.com

Louisiana Tourism Office

529 St. Ann St.
New Orleans, LA 70116
(504) 568-5661

DIVERSION

Drive out to Crawford Landing in
Slidell for Dr. Wagner's Honey Island
Swamp Tour. The two-hour boat
tour explores the beauty of a
cypress swamp. Only 30 minutes
north of New Orleans, off I-10.
(985) 641-1769

Mardi Gras—Let the good times roll!

One of the signatures of Mardi Gras in New Orleans is a series of spectacular parades beginning 12 days before Mardi Gras. During that time, some 60 parades are held in the four-parish area of Orleans, Jefferson, St. Bernard, and St. Tammany.

Mardi Gras parades follow a standard carnival format with a King and Queen in the lead. The royalty are followed by a procession of floats, krewes (organized parade groups), dancing groups, marching bands, clowns, sometimes motorcycle units . . . you name it. It is not uncommon for parade participants to total in the thousands.

Want to see an official New Orleans Mardi Gras parade? Parade routings are printed in advance, so it is easy to find out which street will be used as a route. Curbside seats are free of charge. Grandstand seats for the first week are free from City Hall at (504) 658-4927, and seats for the second week are available for advance purchase from Ticketmaster at (504) 522-5555. Upcoming Mardi Gras dates include February 24, 2009 and February 16, 2010.

NEW ORLEANS, Louisiana



Mardi Gras festivities in the French Quarter

As the much-loved city of New Orleans continues on its path of restoration, the good times still roll for the thousands of music and party lovers who flock here for Mardi Gras and the Jazz and Heritage Festival. The colorful French Quarter, with its mix of cultural influences, boasts structures like the Cabildo and Presbytere where visitors can explore the city's historic roots, as well as the wealth of restaurants that lent the city its reputation for exceptionally delectable cooking. Shoppers at French Market and riverside malls take time for a coffee and beignet at Café Du Monde. *Tax: 13% hotel, with sliding scale of room-per-night charge: \$1 (hotels with less than 300 rooms), \$2 (hotels with less than 1000 rooms), or \$3 (at hotels with 1000+ rooms). 9.75% sales. For local weather, call (504) 529-6259 or (504) 828-4000.*

SELECTED ATTRACTIONS

Audubon Aquarium of the Americas

1 Canal St.
(800) 774-7394

Audubon Zoo

6500 Magazine St.
(800) 774-7394

Blaine Kern's Mardi Gras World

Tours of parade float studios
233 Newton St.
(504) 361-7821

Degas House

Historic home of artist Edgar Degas
2306 Esplanade Ave.
(504) 821-5009 or (800) 755-6730

French Quarter

Historic French and Spanish district
Canal St. to Esplanade Ave.
(Maps for self-guided walking tours available at the Visitors Bureau,
529 St. Ann St.)
(504) 568-5661

Harrah's New Orleans Casino

8 Canal St.
(504) 533-6000 or (800) 427-7247

Herman-Grima/Gallier Historic Houses

French Quarter landmark homes
820 St. Louis St.
(504) 525-5661

Lafayette Cemetery No. 1

Historic Garden District cemetery
1427 6th St.

Louisiana Children's Museum

420 Julia St.
(504) 586-0725

Louisiana State Museum

(504) 568-6968 or (800) 568-6968

- The Cabildo
Site of the Louisiana Purchase transfer
701 Chartres St. in Jackson Square
- The Presbytere
751 Chartres St.
- Old U.S. Mint
400 Esplanade Ave.

National WWII Museum

945 Magazine St.
(504) 527-6012

New Orleans Museum of Art

1 Collins St. in City Park

1...French Quarter

New Orleans Pharmacy Museum

219 Chartres St.

6...Madame Tinketoy's, Easy Rider

Ogden Museum of Southern Art

945 Camp St.
(504) 539-9600

Old Ursuline Convent

Oldest building in the Mississippi Valley
1100 Chartres St.
(504) 529-3040 or (877) 529-2242

St. Louis Cathedral

720 Chartres St. in Jackson Square
(504) 525-9585

DON'T MISS DRIVE

St. Charles Avenue is really a boulevard with a 150-year-old streetcar system winding down the middle. Other sights include huge oaks, period architecture, and the idyllic campuses of Tulane and Loyola Universities.

7...Cemetery, Easy Rider

8...The Roosevelt, Easy Rider

