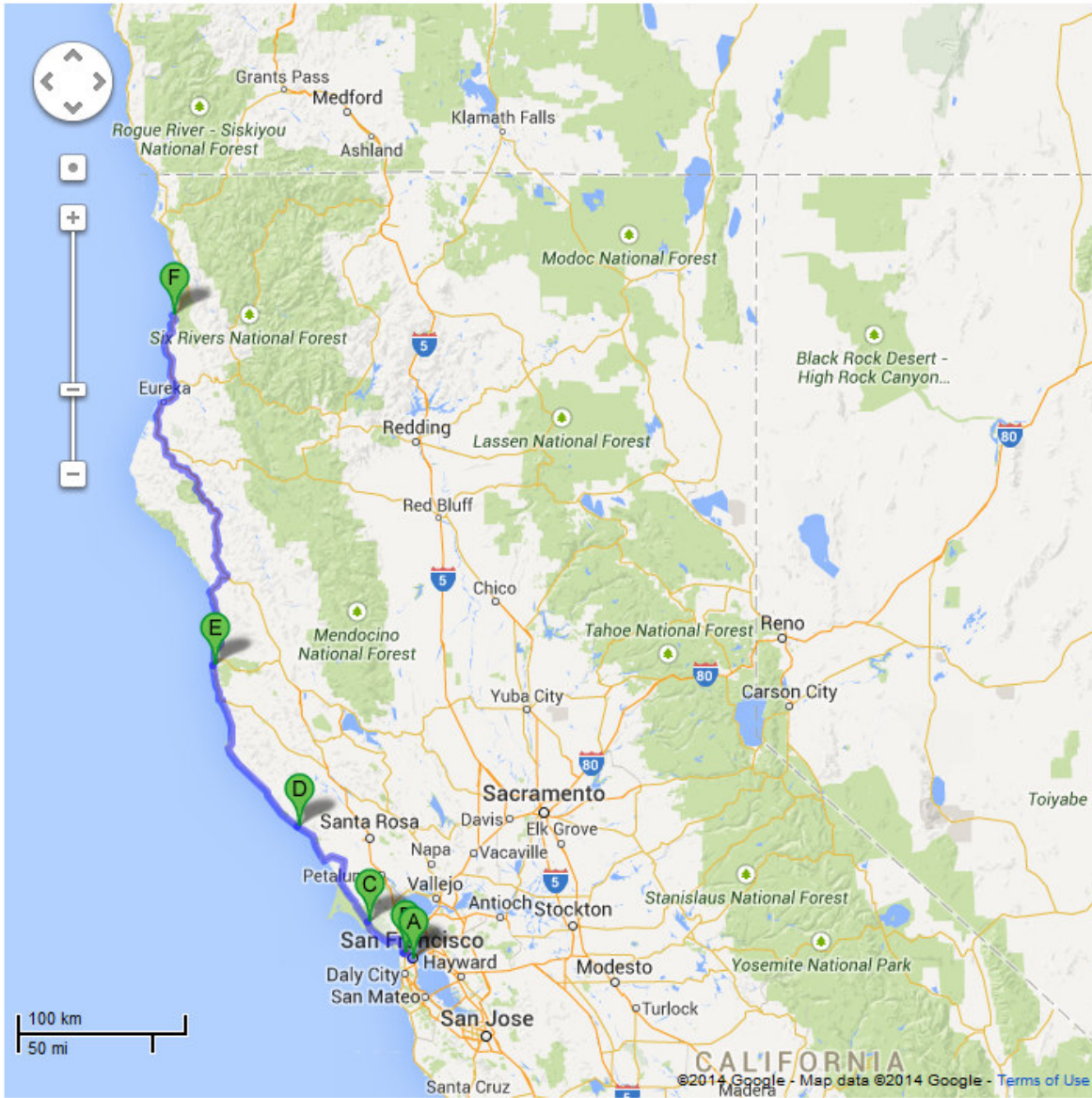


01\_SF-RedwoodCA\_563km\_100-50

563 km - about 1 d 2 h 2 m - @ 420 kms/day = avg speed 70 kph

SF - Golden Gate Bridge - Pacific Hwy - Redwood NP & SP



- A** San Francisco, CA, United States
- B** Golden Gate Bridge, San Francisco, CA, Unit
- C** Muir Beach Overlook, Muir Beach, CA, United
- D** Salt Point State Park, California 1, Jenner, CA
- E** Fort Bragg, CA, United States
- F** Redwood National and State Parks, Humboldt

Golden Gate Bridge **N 37.827141°**, **W 122.47879°** is a suspension bridge spanning the Golden Gate, the strait between San Francisco and Marin County to the north. The masterwork of architect Joseph B. Strauss, whose statue graces the southern observation deck, the bridge took seven years to build, and was completed in 1937. The Golden Gate Bridge was the longest suspension bridge span in the world when it was completed, and has become one of the most popular tourist attractions in San Francisco and California. Since its completion, the span length has been surpassed by eight other bridges. The famous red-orange color of the bridge was specifically chosen to make the bridge more easily visible through the thick fog that frequently shrouds the bridge.



Tolls can be paid online up to 48 hrs after crossing  
<http://www.goldengatebridge.org/>  
<http://www.touropia.com/most-famous-bridges-in-the-world/>

**Pacific Coast Highway California**

**N 37.827141°**, **W 122.47879°** to **N 32.519026°**, **W 117.038269°**,  
**607 mi, 937 km, 12:47 hrs**

Hugging the coast from Golden Gate bridge in San Francisco to Tijuana in Mexico.  
 - Big Sur, with its majestic redwoods - Monterey Bay, sea otters playing in the water -  
 Wine country, including Sonoma County -

This California route is one of the most scenic in the world. Hugging cliffs and coastlines, the Pacific Coast Highway (PCH) follows much of the California coast. However, only a 123-mile (198-kilometer) stretch is the official PCH, as designated by the state of California.

Also called Highway 1, it takes about five hours to drive the PCH. The highway sees the most traffic in July and August. Avoid these times if you want to take a leisurely drive. The road often takes hairpin turns with narrow shoulders and steep drop-offs, so you must be alert at all times.

California's Route 1 leads you to some great beach towns, but it's up around Big Sur that this famed route reaches new heights. Linking California's historic capital, Monterey, with its most extravagant piece of hubristic architecture, Hearst Castle, this unforgettable 100-mile stretch of the PCH carves through cliffs high above the Pacific Ocean.

**Where to Stop:** Most of Big Sur has been protected from unsightly development by preservationist landowners, but the landmark **Nepenthe** has a dining room, bar, and cliff-top terrace that looks out over a 270-degree Pacific panorama.

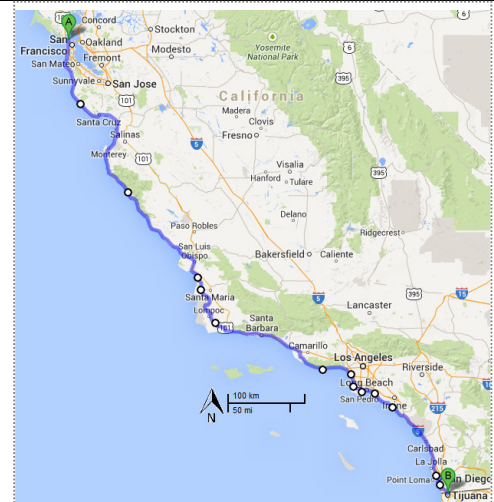
[USA-americas-most-scenic-iconic-roads.doc](#)

[Attractions\USA\\_FiveRoadTrips.AB.pdf](#) [Attractions\CA-Central-Coast.pdf](#) [Attractions\CA-Hwy1\\_LA-Cisco.AB.pdf](#)

<http://adventure.howstuffworks.com/10-beautiful-drives.htm#page=0>

<http://travel.nationalgeographic.com.au/travel/road-trips/california-pacific-coast-road-trip/>

<http://www.lonelyplanet.com/usa/travel-tips-and-articles/788#ixzz2ptclEGYb>



**Highway 1 road trip – San Francisco to Santa Monica Pier, Los Angeles**

**N 37.796844°**, **W 122.469615°** to **N 34.010610°**, **W 118.496276°**, **435 mi, 700 km**,

[Attractions\USA\\_FiveRoadTrips.AB.pdf](#)

**Highway 1**

**San Francisco – Los Angeles**

(ca 70 mil)

Highway One är en av världens mest sceniska vägar och går längs den vackra Kalifornien-kusten. Räkna med minst två dagar, kanske tre, om du vill ta det riktigt lugnt och ha tid med många pauser. Åker du från det andra hållet, från Los Angeles och norrut, så fortsätt gärna förbi San Francisco där Highway One fortsätter i ytterligare 30 mil.



Redwood National and State Parks (RNSP) *N 41.300000°*, *W 124.000000°*



[Attractions\CA-Redwood.jpg](#)

are located in the United States, along the coast of northern California. Comprising Redwood National Park (established 1968) and California's Del Norte Coast, Jedediah Smith, and Prairie Creek Redwoods State Parks (dating from the 1920s), the combined RNSP contain 133,000 acres

(540 km<sup>2</sup>). [http://en.wikipedia.org/wiki/Redwood\\_National\\_and\\_State\\_Parks\\_-\\_cite\\_note-2010\\_Visitor\\_Guide-3](http://en.wikipedia.org/wiki/Redwood_National_and_State_Parks_-_cite_note-2010_Visitor_Guide-3)

Located entirely within Del Norte and Humboldt Counties, the four parks, together, protect 45% of all remaining coast redwood (*Sequoia sempervirens*) old-growth forests, totaling at least 38,982 acres (157.75 km<sup>2</sup>).

These trees are the tallest and one of the most massive tree species on Earth. In addition to the redwood forests, the parks preserve other

indigenous flora, fauna, grassland prairie, cultural resources, portions of rivers and other streams, and 37 miles (60 km) of pristine coastline.

[http://en.wikipedia.org/wiki/Redwood\\_National\\_and\\_State\\_Parks](http://en.wikipedia.org/wiki/Redwood_National_and_State_Parks) <http://www.nps.gov/redw/index.htm>

<http://www.nps.gov/redw/planyourvisit/index.htm> [Attractions\CA-RedwoodScenicDrives.pdf](#)



California

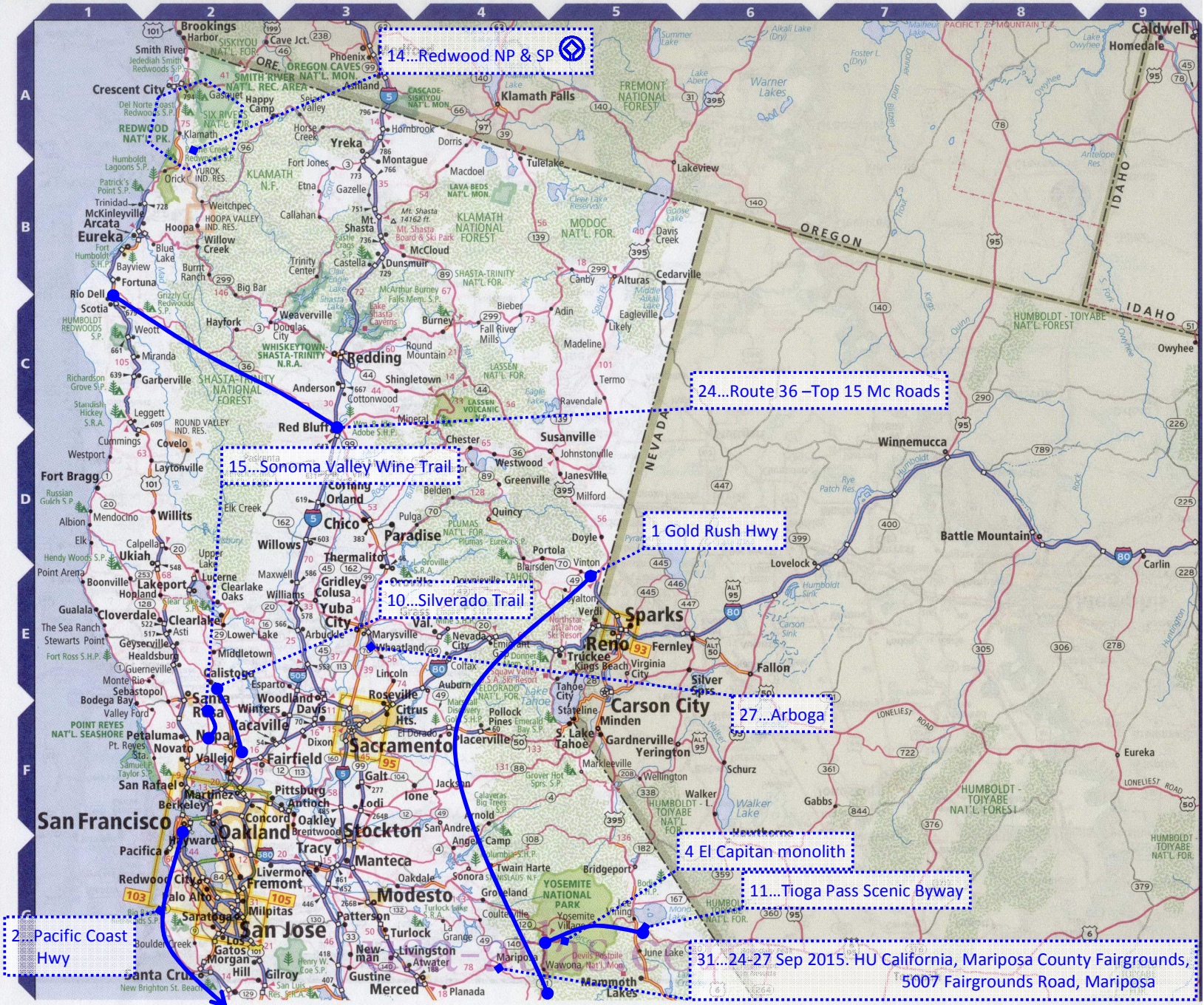
Population: 36,132,147

Land area: 155,959 sq. mi.

Capital: Sacramento

Cities and Towns

Adelanto	K-6
Alpine	N-6
Anaheim	F-3
Anderson	C-3
Antioch	F-3
Apple Valley	L-6
Arcata	B-1
Arroyo Grande	J-3
Arvin	J-5
Atascadero	L-3
Atwater	G-3
Auburn	E-4
Avenal	I-3
Bakersfield	J-4
Barstow	K-6
Beaumont	L-6
Berkeley	F-2
Bishop	H-6
Blythe	M-8
Boulder Creek	G-2
Bravley	N-7
Brentwood	F-3
Buellton	K-3
Calexico	N-7
California City	K-5
Calipatria	N-7
Camarillo	K-4
Cambria	I-2
Carlsbad	M-5
Carmel	D-3
Carpinteria	K-4
Chico	D-3
Chowchilla	H-4
Chula Vista	N-6
Citrus Heights	E-3
Clearlake	E-2
Cloverdale	E-2
Clovis	H-4
Coachella	M-7
Coalinga	I-3
Colusa	E-3
Concord	F-2
Corcoran	I-4
Corning	D-3
Corona	L-5
Crescent City	A-2
Davis	E-3
Death Valley	N-7
Delano	J-4
Desert Hot Springs	L-6
Dixon	F-3
Earlmarl	I-4
El Cajon	N-6
El Centro	N-7
Encinitas	M-5
Escondido	M-6
Eureka	B-1
Exeter	F-2
Fairfield	F-2
Firebaugh	H-3
Fort Bragg	D-1
Fortuna	B-1
Fremont	G-2
Fresno	H-4
Galt	F-3
Gilroy	G-2
Glendale	L-5
Goleta	K-3
Grass Valley	E-4
Greenfield	H-2
Gridley	E-3
Grover Beach	J-3
Guadalupe	J-3
Gustine	G-3
Hanford	I-4
Hayward	F-2
Healdsburg	E-2
Hesperia	L-6
Hollister	H-2
Holtville	N-7
Huntington Beach	L-5
Huron	J-4
Imperial	N-7
Indio	M-7
Ione	L-5
Irvine	L-5
Joshua Tree	L-7
Kerman	H-4
King City	H-3
Kingsburg	I-4
Lake Elsinore	M-6
Lakeport	E-2
Lancaster	K-5
Lemoore	I-4
Lincoln	E-3
Lindsay	E-5
Livermore	G-2
Livingston	G-3
Lodi	F-3
Lompoc	K-3
Long Beach	L-5
Los Angeles	H-3
Los Banos	H-3
Los Gatos	G-2
Madera	H-4
Mammoth Lakes	G-5
Manteca	F-3



Pacific Coast Hwy

14... Redwood NP & SP

24... Route 36 - Top 15 Mc Roads

15... Sonoma Valley Wine Trail

10... Silverado Trail

1 Gold Rush Hwy

27... Arboga

4 El Capitan monolith

11... Tioga Pass Scenic Byway

31... 24-27 Sep 2015: HU California, Mariposa County Fairgrounds, 5007 Fairgrounds Road, Mariposa

Marina	H-2
Martinez	F-2
Marysville	E-3
McFarland	J-4
McKinleyville	B-1
Mendota	H-3
Merced	G-4
Mititas	G-2
Modesto	G-3
Mojave	K-5
Montecito	K-3
Monterey	H-2
Moreno Valley	L-6
Morgan Hill	G-2
Morro Bay	J-2
Murrieta	M-6
Napa	F-2
Needles	L-9
Newman	G-3
Newport Beach	L-5
Novato	F-2
Oakdale	G-3
Oakland	F-2
Oakley	F-3
Oceanside	M-5
Oildale	L-4
Ontario	L-5
Orland	D-3
Oroville	D-3
Oxnard	K-4
Pacific Grove	H-2
Pacifica	F-2
Palm Desert	M-7
Palm Springs	M-6
Palmdale	K-5
Palo Alto	D-3
Paradise	L-5
Pasadena	L-3
Paso Robles	L-3
Patterson	G-3
Perris	L-6
Petaluma	F-2
Pittsburg	F-2
Placerville	F-4
Planada	G-4
Pollock Pines	F-4
Pomona	L-5
Porterville	L-5
Quincy	D-4
Ramona	M-6
Red Bluff	C-3
Redding	C-3
Redlands	L-6
Redwood City	G-2
Reedley	H-4
Ridgecrest	L-6
Riverside	L-6
Rosamond	K-5
Roseville	E-3
Sacramento	F-3
Salinas	H-2
San Bernardino	L-6
San Clemente	M-5
San Diego	N-5
San Francisco	F-2
San Jose	G-2
San Juan Capistrano	M-5
San Luis Obispo	M-3
San Rafael	F-2
Santa Ana	L-5
Santa Barbara	K-3
Santa Clarita	K-5
Santa Cruz	G-2
Santa Maria	J-3
Santa Monica	L-4
Santa Paula	K-4
Santa Rosa	E-2
Saratoga	G-2
Seaside	H-2
Selma	H-4
Shafter	J-4
Simi Valley	K-4
Soledad	H-2
Solvang	K-3
Sonoma	G-4
South Lake Tahoe	F-5
Stockton	F-3
Susanville	D-5
Taft	J-4
Tehachapi	K-5
Temecula	M-6
Thermalito	D-3
Thousand Oaks	L-4
Torrance	L-5
Tracy	G-3
Truckee	E-5
Tulare	J-4
Turlock	G-3
Twentynine Palms	L-7
Ukiah	D-2
Vacaville	F-2
Vallejo	F-2
Ventura	K-4
Victorville	L-6
Visalia	J-4
Vista	M-6
Wasco	L-4
Watsonville	G-2
Willits	D-2
Willows	D-3
Winters	E-3
Woodlake	L-5
Woodland	E-3

