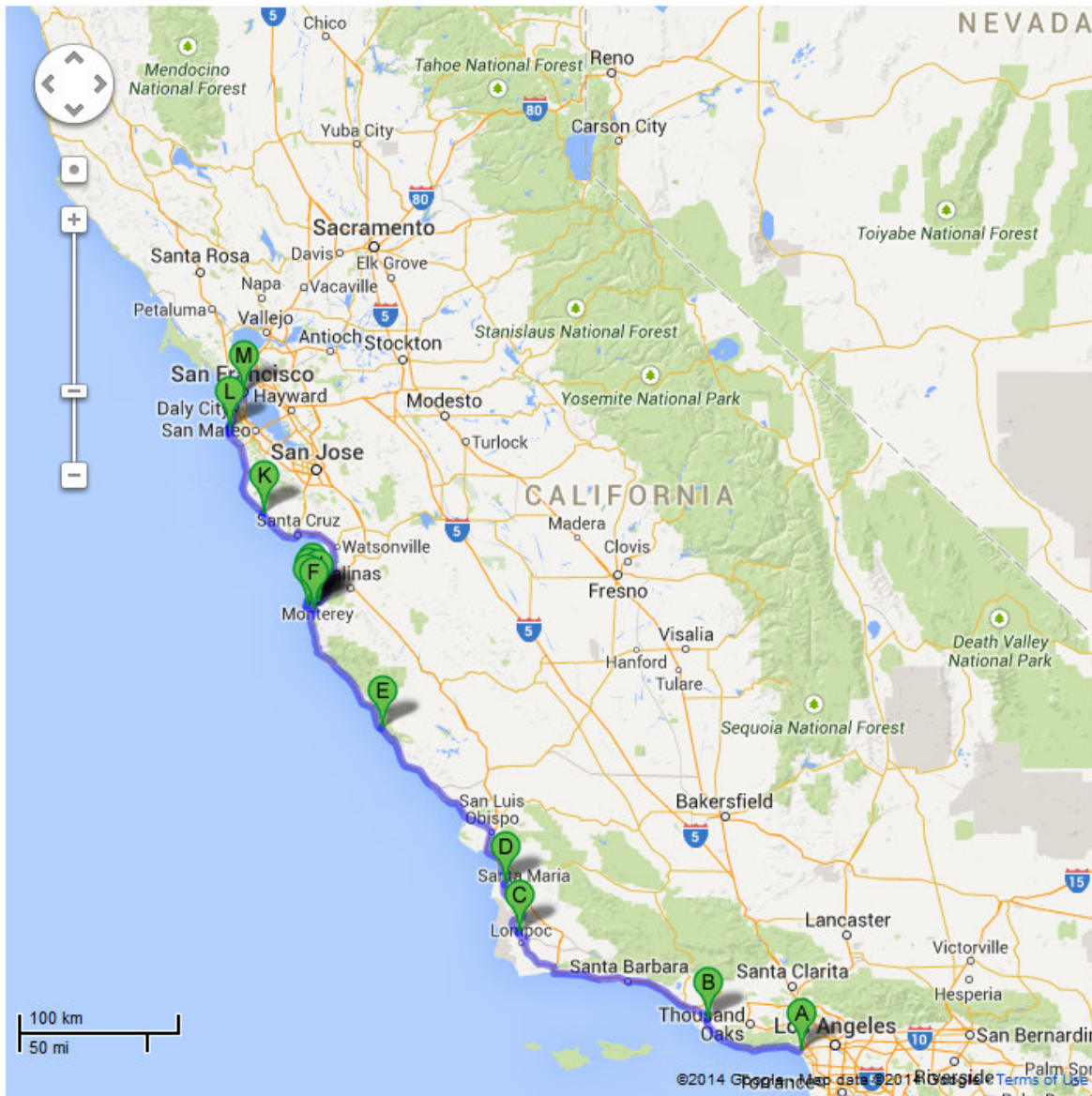


01_LA-SF_762km_100-50

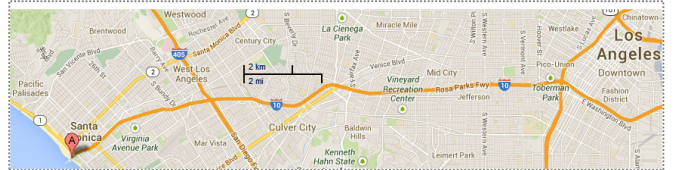
762 km - about 1 d 4 h 53 m - @ 420 kms/day = avg speed 70 kph

Santa Monica Pier, Route 66, LA - Rebuilding Factory, Oxnard - Pacific Hwy - 17 Mile Drive & Lone Cypress - Pacific Hwy - SF



- | | |
|--|--|
| A Santa Monica, CA, United States | H Point Joe, Del Monte Forest, CA, United State |
| B 2362 Sturgis Road, Oxnard, CA, United State | I Point Pinos Lighthouse, Asilomar Avenue, Pa |
| C Lompoc, CA, United States | J Monterey, CA, United States |
| D Guadalupe St, Guadalupe, CA, United States | K Pomponio State Beach, San Mateo County, C |
| E Hearst Castle, Hearst Castle Road, San Sime | L Montara, CA, United States |
| F Carmel, CA, United States | M San Francisco, CA, United States |
| G Lone Cypress, Del Monte Forest, CA, United | |

Route 66, end of the trail at Santa Monica Pier
N 34.008905°, W 118.497865°



Rebuilding Factory, 2362 Sturgis Rd, Oxnard 805 981 3777 [Attractions/CA-RebuildingFactory_YourPartRebuiltFast.pdf](#)

Pacific Coast Highway California
N 37.827141°, W 122.47879° to N 32.519026°, W 117.038269°,
607 mi, 937 km, 12:47 hrs

Hugging the coast from Golden Gate bridge in San Francisco to Tijuana in Mexico.
 - Big Sur, with its majestic redwoods - Monterey Bay, sea otters playing in the water -
 Wine country, including Sonoma County -

This California route is one of the most scenic in the world. Hugging cliffs and coastlines, the Pacific Coast Highway (PCH) follows much of the California coast. However, only a 123-mile (198-kilometer) stretch is the official PCH, as designated by the state of California.

Also called Highway 1, it takes about five hours to drive the PCH. The highway sees the most traffic in July and August. Avoid these times if you want to take a leisurely drive. The road often takes hairpin turns with narrow shoulders and steep drop-offs, so you must be alert at all times.

California's Route 1 leads you to some great beach towns, but it's up around Big Sur that this famed route reaches new heights. Linking California's historic capital, Monterey, with its most extravagant piece of hubristic architecture, Hearst Castle, this unforgettable 100-mile stretch of the PCH carves through cliffs high above the Pacific Ocean.

Where to Stop: Most of Big Sur has been protected from unsightly development by preservationist landowners, but the landmark [Nepenthe](#) has a dining room, bar, and cliff-top terrace that looks out over a 270-degree Pacific panorama.

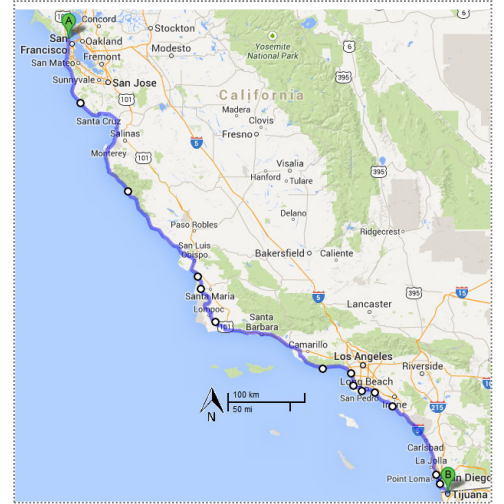
[USA-americas-most-scenic-iconic-roads.doc](#)

[Attractions\USA FiveRoadTrips.AB.pdf](#) [Attractions\CA-Central-Coast.pdf](#) [Attractions\CA-Hwy1 LA-Cisco.AB.pdf](#)

<http://adventure.howstuffworks.com/10-beautiful-drives.htm#page=0>

<http://travel.nationalgeographic.com.au/travel/road-trips/california-pacific-coast-road-trip/>

<http://www.lonelyplanet.com/usa/travel-tips-and-articles/788#ixzz2ptcEGYb>



17-Mile Drive, **N 36.613047°, W 121.8542° to N 36.553499°, W 121.910677°, 17 mi, 27 km, 0:45 hrs**

The so-called 17-Mile Drive spanning California's Monterey Peninsula clocks in at less than 10 miles long. On a privately owned strip off Highway 1, stretching from the towns of Pacific Grove to Carmel, the road runs through the Del Monte forests belonging to the exclusive Pebble Beach golf community. With surf-beaten cliffs and colonies of harbor seals, it also boasts spectacular sunsets over the Pacific that residents say are worth the \$9 entry fee to use the private road.

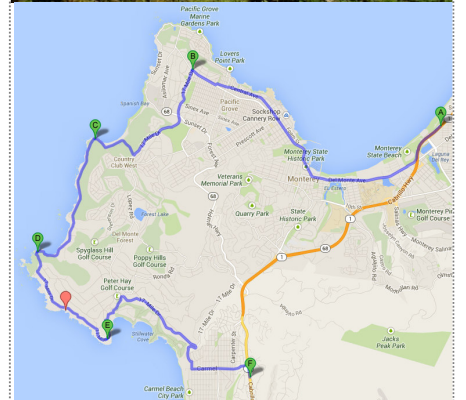
Stop: The Monterey Bay Aquarium has sunlit kelp-forest tanks, a petting pool, and a million-gallon tank with giant sharks and sea turtles. (montereybayaquarium.org; \$29.95.)

Lone Cypress Tree near Monterey is probably the most famous point along the 17-Mile Drive, a scenic road through Pacific Grove and Pebble Beach. The road winds through miles of breathtaking coastal views of the Pacific, with turnouts along the way at the most historical and picturesque sites. The Monterey Cypress is a species of cypress that is endemic to the Central Coast of California. In the wild, the species is confined to two small populations, near Monterey and Carmel.

<http://www.touropia.com/famous-trees-in-the-world/>

[Attractions\USA-americas-most-scenic-iconic-roads.doc](#)

[Attractions\CA-LoneCypressMonterey.jpg](#)



California

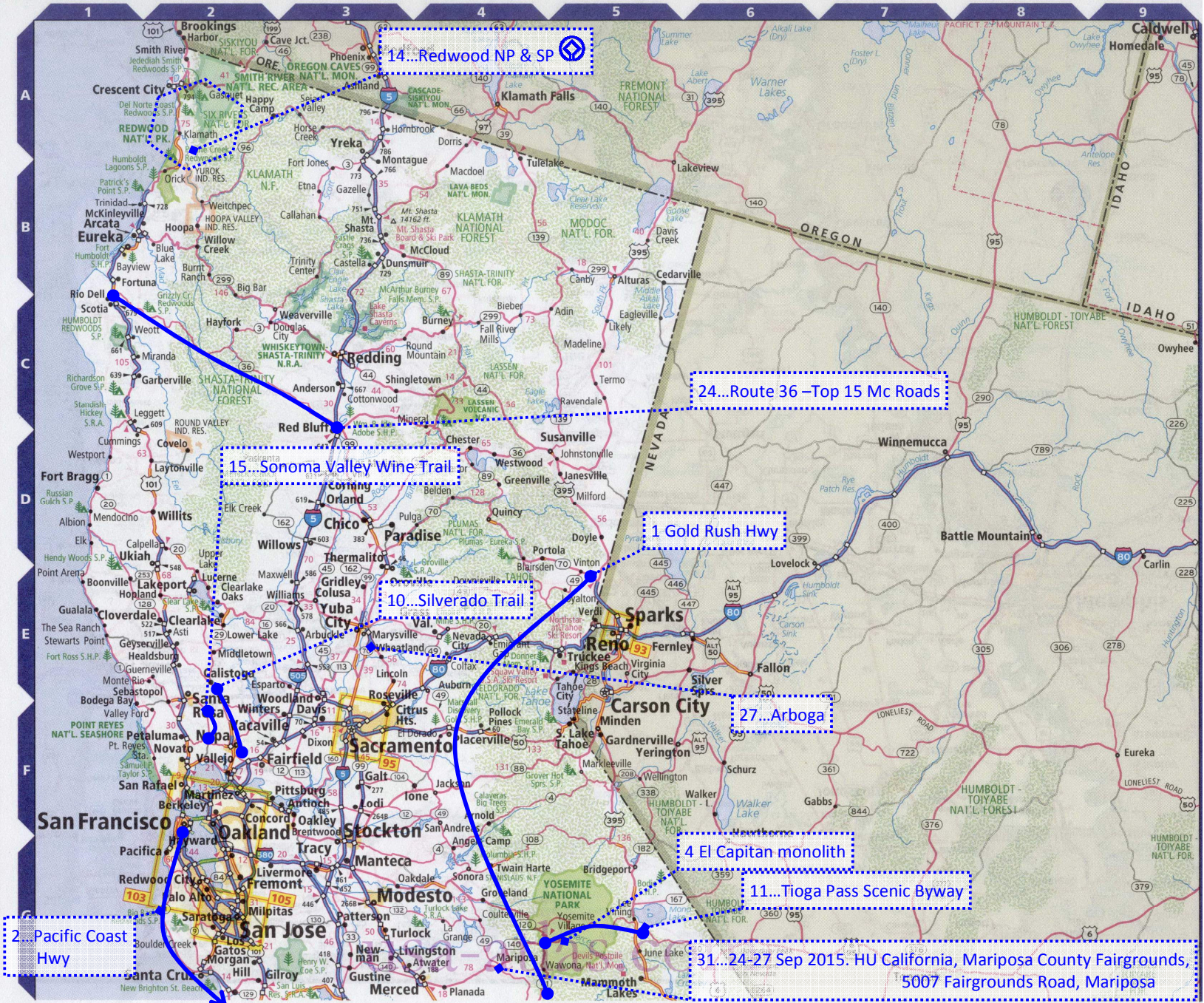
Population: 36,132,147

Land area: 155,959 sq. mi.

Capital: Sacramento

Cities and Towns

Adelanto	K-6
Alpine	N-6
Anaheim	F-3
Anderson	C-3
Antioch	F-3
Apple Valley	L-6
Arcata	B-1
Arroyo Grande	J-3
Arvin	J-5
Atascadero	G-3
Atwater	L-3
Auburn	E-4
Avenal	I-3
Bakersfield	J-4
Barstow	K-6
Beaumont	L-6
Berkeley	F-2
Bishop	H-6
Blythe	M-8
Boulder Creek	G-2
Bravley	N-7
Brentwood	F-3
Buellton	K-3
Calexico	N-7
California City	K-5
Calipatria	N-7
Camarillo	K-4
Cambria	I-2
Carlsbad	M-5
Carmel	E-2
Carpinteria	K-4
Chico	D-3
Chowchilla	H-4
Chula Vista	N-6
Citrus Heights	E-3
Clearlake	E-2
Cloverdale	E-2
Clovis	H-4
Coachella	M-7
Coalinga	I-3
Colusa	E-3
Concord	F-2
Corcoran	I-4
Corning	D-3
Corona	L-5
Crescent City	A-2
Davis	E-3
Death Valley	J-7
Delano	J-4
Desert Hot Springs	L-6
Dixon	F-3
Earlham	I-4
El Cajon	N-6
El Centro	N-7
Encinitas	M-5
Escondido	M-6
Eureka	B-1
Exeter	F-2
Fairfield	F-2
Firebaugh	H-3
Fort Bragg	D-1
Fortuna	B-1
Fremont	G-2
Fresno	H-4
Galt	F-3
Gilroy	G-2
Glendale	L-5
Goleta	K-3
Grass Valley	E-4
Greenfield	H-2
Gridley	E-3
Grover Beach	J-3
Guadalupe	J-3
Gustine	G-3
Hanford	I-4
Hayward	F-2
Healdsburg	E-2
Hesperia	L-6
Hollister	H-2
Holtville	N-7
Huntington Beach	L-5
Huron	J-4
Imperial	N-7
Indio	M-7
Ione	L-5
Irvine	L-5
Joshua Tree	L-7
Kerman	H-4
King City	H-3
Kingsburg	I-4
Lake Elsinore	M-6
Lakeport	E-2
Lancaster	K-5
Lemoore	I-4
Lincoln	E-3
Lindsay	E-5
Livermore	G-2
Livingston	G-3
Lodi	F-3
Lompoc	K-3
Long Beach	L-5
Los Angeles	H-3
Los Banos	H-3
Los Gatos	G-2
Madera	H-4
Mammoth Lakes	J-5
Manteca	F-3



Marina	H-2
Martinez	F-2
Marysville	E-3
McFarland	J-4
McKinleyville	B-1
Mendota	H-3
Merced	G-4
Milpitas	G-2
Modesto	G-3
Mojoave	K-5
Montecito	K-3
Monterey	H-2
Moreno Valley	L-6
Morgan Hill	G-2
Morro Bay	J-2
Murieta	M-6
Napa	F-2
Needles	L-9
Newman	G-3
Newport Beach	L-5
Novato	F-2
Oakdale	G-3
Oakland	F-2
Oakley	F-3
Oceanside	M-5
Oildale	L-4
Ontario	L-5
Orland	D-3
Oroville	D-3
Oxnard	K-4
Pacific Grove	H-2
Pacifica	F-2
Palm Desert	M-7
Palm Springs	M-6
Palmdale	K-5
Palo Alto	D-3
Paradise	L-5
Pasadena	L-3
Paso Robles	G-3
Patterson	G-3
Perris	L-6
Petaluma	F-2
Pittsburg	F-2
Placerville	F-4
Planada	G-4
Pollock Pines	F-4
Pomona	L-5
Porterville	L-5
Quincy	D-4
Ramona	M-6
Red Bluff	C-3
Redding	C-3
Redlands	L-6
Redwood City	G-2
Reedley	H-4
Ridgecrest	L-6
Riverside	L-6
Rosamond	K-5
Roseville	E-3
Sacramento	F-3
Salinas	H-2
San Bernardino	L-6
San Clemente	M-5
San Diego	N-5
San Francisco	F-2
San Jose	G-2
San Juan Capistrano	M-5
San Luis Obispo	M-3
San Rafael	F-2
Santa Ana	L-5
Santa Barbara	K-3
Santa Clarita	K-5
Santa Cruz	G-2
Santa Maria	J-3
Santa Monica	L-4
Santa Paula	K-4
Santa Rosa	E-2
Saratoga	G-2
Seaside	H-2
Selma	H-4
Shafter	J-4
Simi Valley	K-4
Soledad	H-2
Solvang	K-3
Sonoma	G-4
South Lake Tahoe	F-5
Stockton	F-3
Susanville	D-5
Taft	J-4
Tehachapi	K-5
Temecula	M-6
Thermalito	D-3
Thousand Oaks	L-4
Torrance	L-5
Tracy	G-3
Truckee	E-5
Tulare	J-4
Turlock	G-3
Twentynine Palms	L-7
Ukiah	D-2
Vacaville	F-2
Vallejo	F-2
Ventura	K-4
Victorville	L-6
Visalia	J-4
Vista	M-6
Wasco	L-4
Watsonville	G-2
Willits	D-2
Willows	D-3
Winters	E-3
Woodlake	L-5
Woodland	E-3

