

PHOTOS By Sharon Scott
3rd January 2011

OF ROCKY FLOODS



IMG_0301 Cartoon in Morning Bulletin 03.01.2011



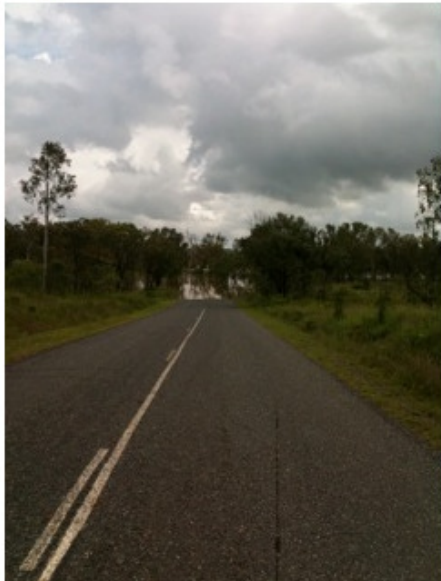
IMG_0303 News article taken from Morning Bulletin



IMG_0302 - Another cartoon 03.01.2010



IMG_0304 - Barriers being constructed around terminal



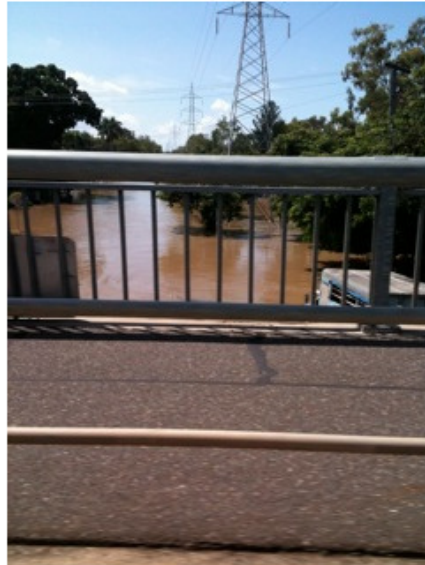
IMG_0305 Low area on Belmont Road - close to my place - can still get into town via Northern Highway. Taken today am.



IMG_0307 Another angle of the park



IMG_0306 Park area along Glenmore Road just near the Railway Bridge- Taken today



Crossing the Fitzroy river bridge looking towards the Racecourse - Callaghan Park - thats the road with the stream of water



the road from Council Caravan Park Driveway of Service Station across



IMG_0311 Water starting to approach onto road in Quay Street - down from the ABC studio



IMG_0312 Standing at the cnr of Quay and Stanley - looking back up to East and Bolsover Streets



IMG_0313 Coast Guards office on Quay Street



IMG_0312 Standing at the cnr of Quay and Stanley - looking back up to East and Bolsover Streets



IMG_0316 ABC mobile studio on Quay Street



IMG_0313 Coast Guards office on Quay Street



IMG_0317 Rescue Helicopter Headquarters in the surrounds of the Rockhampton Airport



Another angle of Capricorn Helicopter Office



The road leading towards the airport



Looking towards the run way taken from roof of car. Another shot of runway

Report Harold Park in Rockhampton 03 Jan 2011

I just got back from a ride around Rocky now looking at the waters. Yep the town is shut off to the Bruce highway at the Mt Morgan turnoff and at the Yeppen but open to trucks only north at Alligator Creek.

It's about 1/2 meter deep there now. It will close on nightfall they said. When I was there at 1pm today, the river was just a whisker over 9-1 meters in Quay St at the official marker. It was 9-3 in the 1991 flood.

They think it will get to 9-4 this time. But of course they are not sure.

Your place will be fine for sure judging from the streets around it I saw. Perhaps a bit rising out of the drains into the streets a bit, but that is happening all over town and just filling the gutters.

The airport is closed since Saturday midday with about 1 meter over the middle of the main runways now.

The road to Yeppoon is fine of course. The peak is expected on Wednesday this week and the water will stay up for some 10 days. Water is creeping up all of the streets coming off Quay street with them all shut off up to the first block. Like around the Criterion Hotel and Centre Stage in the Mall and into the yard at Flexi hire on the corner.

Further down East street towards Depot Hill it's really flooded out with water from 1 to 4-5 meters deep there now. The Harley dealer has water all down both sides of William street now but it's only got the gutters full at this stage. Gladstone road is closed right back to the first set of LIGHTS as you turn out from William Street from the Harley shop.

Lots of areas now have NO POWER as it has had to be turned off due to flooding. No power makes it hard for people even if they aren't driven out by water levels. We are fine and ok down here.

There has been no rain now since Thursday morning so it's drying out well above flood level.

They are going to fly by Choppers food stuffs into Rocky during the 2 weeks it will be cut off. Also the Ferry Service from Great Keppel Island is doing a shuttle service daily to Gladstone for folks needing to fly from Gladstone airport. I shall send some photos here that were taken by AIR on the 31st Friday. There is a lot more water around now though.

Aerial photos from Rocky, follow link
<http://www.petrosk.com.au/petrosk/gallery.asp?q=36>

Harold Park again 04 January

By the way they HAVE SHUT OFF the Northern Access to Rocky at Alligator Creek last night. No access by road into Rocky now. From the Bruce highway anyway, Yeppoon to Rocky is still open of course and will remain so.

Correction: I just heard on tv that the road North over Alligator Creek is apparently STILL OPEN now just. But it is only to absolutely necessary truckloads of things for town.

A day at the Race Course (06 Jan)





A day at the Race Course (06 Jan)- continued..





Much Further West, Banana Theodore









